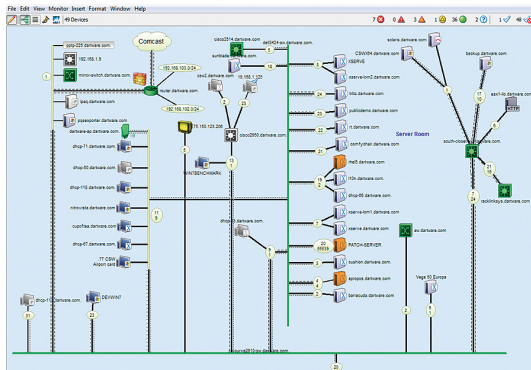


DATASHEET

# InterMapper

## Comprehensive Network Monitoring, Mapping, and Alerting

InterMapper is an enterprise monitoring, mapping, and alerting tool that helps network administrators maintain healthy IT environments. InterMapper's live view of your network enables planning of hardware, software, and bandwidth requirements to maximize uptime with minimal resources. InterMapper offers the rich features you need to improve network reliability and reduce operating costs, in an easy-to-use tool. Whether your network is building-wide, campus-wide, or world-wide, with InterMapper, you'll know exactly what's going on with your network.



InterMapper offers a live view of your network, allowing you to identify hardware, software, or traffic issues in real time.

### Capabilities

InterMapper's efficient, low-bandwidth polling engine can scale to test thousands of devices, providing an at-a-glance, real-time view of your network. Monitor your devices, interfaces, services, applications, connections, and traffic patterns from anywhere in the world and on any mobile device. InterMapper offers the detailed information you need to address performance problems and improve the health of your network.

### Real-Time Monitoring

InterMapper's real-time monitoring capabilities help to identify hardware, software, or traffic problems on your network. Conduct real-world testing of production systems or poll the system to see the current status of your network. InterMapper also works with virtualized or cloud-based environments.

## PRODUCT SUMMARY

### KEY FEATURES

- Same screen mapping and monitoring
- Live, documented view of your network
- Real-time, high-speed polling and alerting
- Variable polling intervals
- Customizable notifications
- Runs on most platforms (Windows, Mac, Linux)
- Integration with AutoMate and Splunk
- Fast download and install
- Easy configuration with auto-discovery

### SYSTEM REQUIREMENTS

- Windows 7/Windows 8/Windows 10/ Vista/XP and Windows Server 2012/2008
- Mac OS X 10.5 and newer
- Linux distributions, including Red Hat, SUSE, Ubuntu, and others

### RELATED PRODUCTS

- InterMapper RemoteAccess
- InterMapper Flows

## Intelligent Mapping

InterMapper's intelligent mapping feature automatically discovers Layer 2 and Layer 3 connections and creates geographical and hierarchical views. Intelligent mapping also helps to create documentation of your network's topography for compliance support.

## Smart Alerting

InterMapper's smart alerting features offer configurable, multi-level notifications for warning, alarm, critical, and up/down conditions. Send alerts to email, mobile phone (text/SMS), audible alerts, pagers, and run scripts. You choose the alerts that matter to you and customize threshold settings at the device or interface level to minimize background noise.

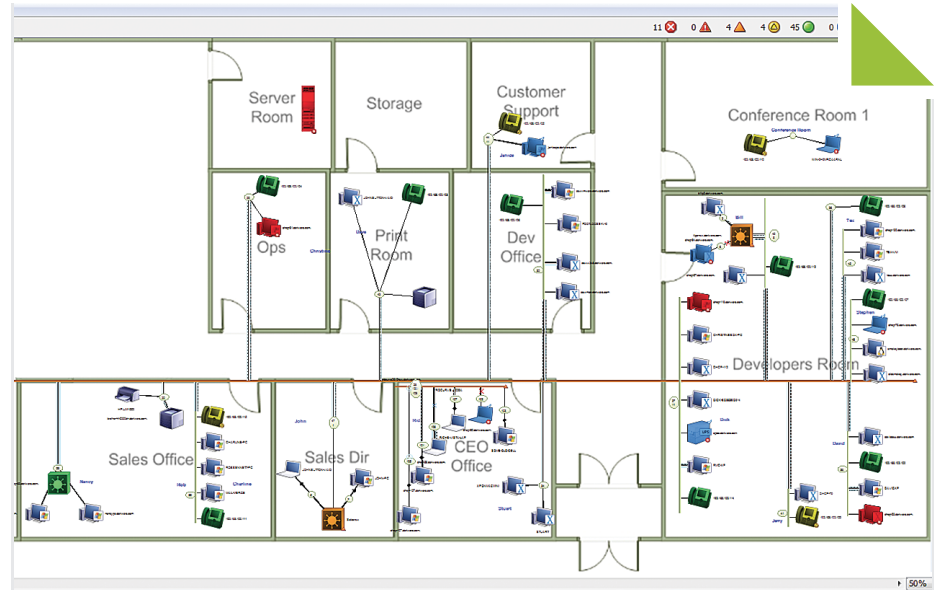
Integration with AutoMate business process automation software on the Windows platform allows you to set particular alerts to trigger commands within AutoMate. Once InterMapper has notified you of a critical issue, AutoMate then performs pre-assigned responses to prevent the failing of critical devices.

## Valuable Information

InterMapper offers one-click charting of any data and stores historical data for trend analysis. Using InterMapper's comprehensive, web-based reports module, you can easily view the information vital to your network's health.

## Probe Any Device

InterMapper's built-in probes monitor critical performance statistics on common equipment. Check availability/outages, packet loss, response time, traffic, and error rates. User-created probes can collect important data for custom applications and are



Create detailed maps of your network with ease. View a geographical map or drill down to a specific building or network site.

available for download. Customize probes to monitor anything on your network, including environmental sensors, facilities systems, industrial equipment, and more.

## Let's Get Started

See how InterMapper can help you map and monitor your network. Visit [www.helpsystems.com/intermapper](http://www.helpsystems.com/intermapper) or call **877-276-6903** for more information or a free 30-day trial.



InterMapper | A Division of HelpSystems | [www.helpsystems.com/intermapper](http://www.helpsystems.com/intermapper)  
United States: 800-328-1000 | Outside the US: +44 (0) 870 120 3148

### About HelpSystems

HelpSystems is a leading provider of systems & network management, business intelligence, and security & compliance software. We help businesses reduce data center costs by improving operational control and delivery of IT services.